



INFECTION CONTROL & STERILE PROCESSING PORTFOLIO

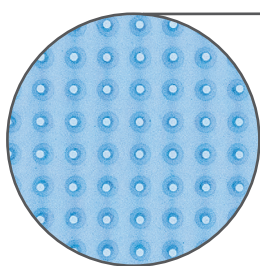
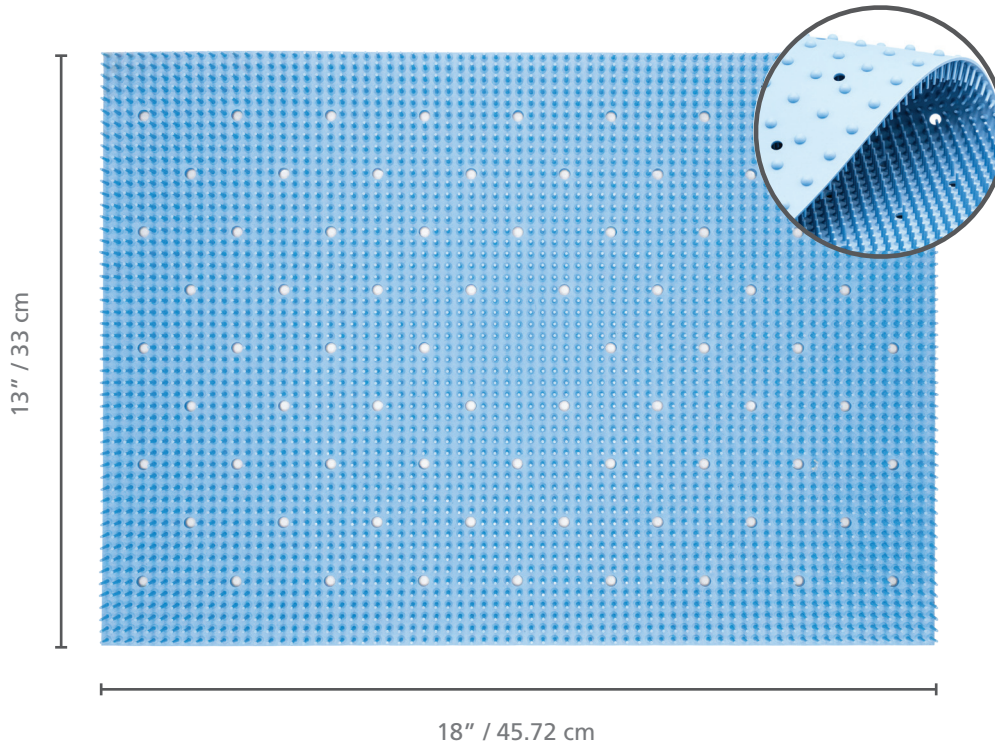
Established in 1997. Proudly Canadian. 
Sold in over 80 countries worldwide.



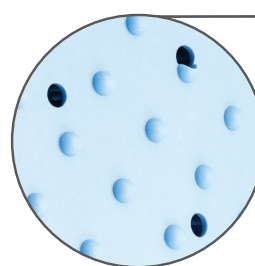
BATRIK SILICONE PIN MAT

Our Silicone Pin Mat cushions, protects, and organizes delicate surgical instruments for sterilization. The elevated nubs provide greater air-flow ventilation and drying, significantly reducing residual moisture collection.

- Reusable
- Autoclavable
- Latex free



FRONT SIDE
Pins keep instruments securely in place



BACK SIDE
Numerous holes and elevated nubs provide superior venting and reduce water collection

PRODUCT SELECTION

ITEM #	DIMENSIONS	PACKAGING
13-2001	13" x 18" (33 cm x 45.72 cm) 11.97 mm high from base of mat to end of pin 15.53 mm high from base of elevated nub to end of pin	1 unit
13-2005	13" x 18" (33 cm x 45.72 cm) 11.97 mm high from base of mat to end of pin 15.53 mm high from base of elevated nub to end of pin	5 units

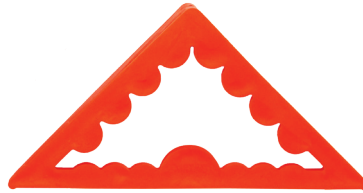
GOOD TO KNOW:
CUSTOM SIZES
ARE AVAILABLE
UPON REQUEST

BATRIK CORNER POCKETS™

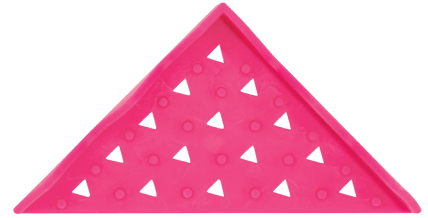
With three models to choose from, our Corner Pockets™ portfolio is a truly comprehensive line of products designed to prevent tearing associated with sharp corners or feet on surgical trays.



18-CP02



18-CP07

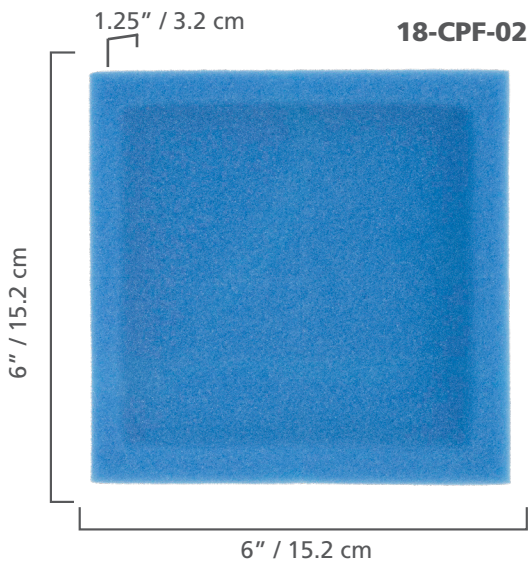


18-CP06

COLOUR	BLUE	RED	PINK
USAGE	SINGLE-USE	REUSABLE <i>withstands repeated sterilization up to 134°C</i>	REUSABLE <i>withstands repeated sterilization up to 134°C</i>
DIMENSIONS	2.8" x 4" (7.3 cm x 10.3 cm)	2.8" x 4" (7.3 cm x 10.3 cm)	3.4" x 4.7" (8.5 cm x 12 cm)
LATEX-FREE	✓	✓	✓
NO MOISTURE RETENTION	✓	✓	✓
FABRICATION	Flexible, silicone-like plastic	Flexible, silicone-like plastic	Our most flexible plastic for easiest placement and most secure protection

SOFT POCKETS™

Our Soft Pockets™ Foam Corner Protectors are made from high density foam to effectively cushion and protect the corners of surgical trays to prevent tearing. They are especially useful with heavier instrument sets.



PRODUCT SELECTION

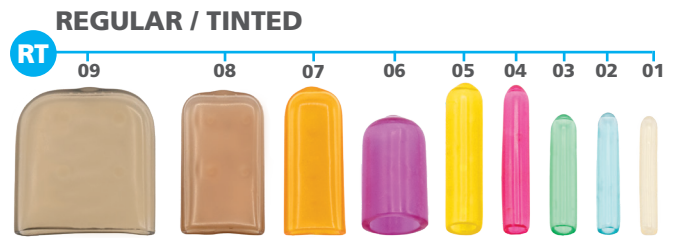
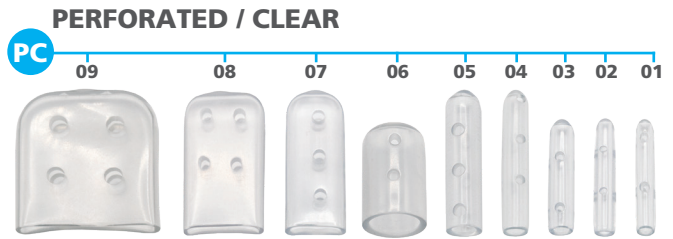
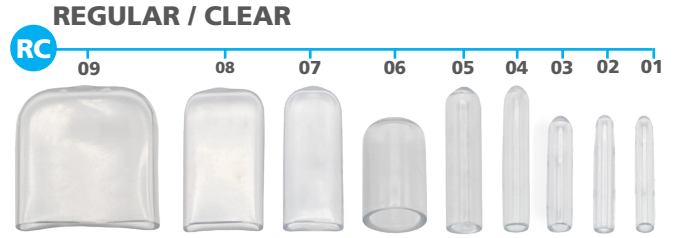
ITEM #	DESCRIPTION	PACKAGING
18-CP02**	Corner Pockets™ <i>Single-Use, Blue</i>	240 / Bag
18-EVAL2**	Corner Pockets™ <i>Single-Use, Blue</i>	24 / Bag
18-CP07	Corner Pockets™ <i>Reusable, Red</i>	80 / Bag
18-CORNER	Corner Pockets™ <i>Reusable, Red</i>	320 / Box (4 Bags of 80 pcs)
18-EVAL7	Corner Pockets™ <i>Reusable, Red</i>	24 / Bag
18-CP06	Corner Pockets™ <i>Reusable, Pink</i>	80 / Bag
18-CPF-02	Soft Pockets™ <i>Single-Use Foam Corner Protectors</i>	80 / Box (24 Boxes / Pallet)

** Although the single use Corner Pockets™ appear similar to the reusable models they are blended differently and have only been validated as single-use. Re-using them may compromise sterility.

BATRIK INSTRUMENT PROTECTORS

Our Instrument Protectors protect the tips and edges of instruments to prevent damage during handling and sterilization. Available in a wide array of color coded sizes for almost every application, including osteotome, retractor, double, and perforated.

- Steam and gas permeable
- Perforated protectors reduce vacuum seal and moisture build-up
- Validated for pre-vacuum sterilization*
- Multiple color-coded sizes
- Latex Free
- Non-Sterile



*Independent laboratory tested to validate pre-vacuum steam sterilization efficacy in a healthcare setting

PRODUCT SELECTION

REGULAR & PERFORATED / CLEAR



RC-07



PC-07

ITEM # REGULAR	ITEM # PERFORATED	COLOR	DIMENSIONS
RC-01	PC-01	Clear	0.062" x 0.75" (1.57 mm x 19 mm)
RC-02	PC-02	Clear	0.075" x 0.75" (2 mm x 19 mm)
RC-03	PC-03	Clear	0.109" x 0.75" (2.77 mm x 19 mm)
RC-04	PC-04	Clear	0.125" x 1" (3.18 mm x 25.4 mm)
RC-05	PC-05	Clear	0.187" x 1" (4.75 mm x 25.4 mm)
RC-06	PC-06	Clear	0.406" x 0.75" (10.3 mm x 19 mm)
RC-07	PC-07	Clear	0.062" x 0.375" x 1" (1.57 mm x 9.53 mm x 25.4 mm)
RC-08	PC-08	Clear	0.078" x 0.625" x 1" (2 mm x 15.875 mm x 25.4 mm)
RC-09	PC-09	Clear	0.125" x 1" x 1" (3.18 mm x 25.4 mm x 25.4 mm)
RC-10	PC-10	Clear	Assorted

PACKAGING: Bag of 100

REGULAR & PERFORATED / TINTED



RT-07



PT-07

RT-01	PT-01	Tinted White	0.062" x 0.75" (1.57 mm x 19 mm)
RT-02	PT-02	Tinted Blue	0.075" x 0.75" (2 mm x 19 mm)
RT-03	PT-03	Tinted Green	0.109" x 0.75" (2.77 mm x 19 mm)
RT-04	PT-04	Tinted Red	0.125" x 1" (3.18 mm x 25.4 mm)
RT-05	PT-05	Tinted Yellow	0.187" x 1" (4.75 mm x 25.4 mm)
RT-06	PT-06	Tinted Maroon	0.406" x 0.75" (10.3 mm x 19 mm)
RT-07	PT-07	Tinted Orange	0.062" x 0.375" x 1" (1.57 mm x 9.53 mm x 25.4 mm)
RT-08	PT-08	Tinted Brown	0.078" x 0.625" x 1" (2 mm x 15.875 mm x 25.4 mm)
RT-09	PT-09	Tinted Black	0.125" x 1" x 1" (3.18 mm x 25.4 mm x 25.4 mm)
RT-10	PT-10	Tinted Assorted	Assorted

PACKAGING: Bag of 100

REGULAR & PERFORATED / SOLID



RS-07



PS-07

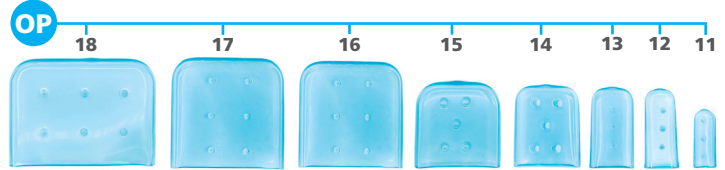
RS-01	PS-01	Solid White	0.062" x 0.75" (1.57 mm x 19 mm)
RS-02	PS-02	Solid Blue	0.075" x 0.75" (2 mm x 19 mm)
RS-03	PS-03	Solid Green	0.109" x 0.75" (2.77 mm x 19 mm)
RS-04	PS-04	Solid Red	0.125" x 1" (3.18 mm x 25.4 mm)
RS-05	PS-05	Solid Yellow	0.187" x 1" (4.75 mm x 25.4 mm)
RS-06	PS-06	Solid Maroon	0.406" x 0.75" (10.3 mm x 19 mm)
RS-07	PS-07	Solid Orange	0.062" x 0.375" x 1" (1.57 mm x 9.53 mm x 25.4 mm)
RS-08	PS-08	Solid Brown	0.078" x 0.625" x 1" (2 mm x 15.875 mm x 25.4 mm)
RS-09	PS-09	Solid Black	0.125" x 1" x 1" (3.18 mm x 25.4 mm x 25.4 mm)
RS-10	PS-10	Solid Assorted	Assorted

PACKAGING: Bag of 100

ITEM #	DIMENSIONS
OP-11	0.25" x 0.75" (6.35 mm x 19.05 mm)
OP-12	0.375" x 1" (9.53 mm x 25.4 mm)
OP-13	0.5" x 1" (12.7 mm x 25.4 mm)
OP-14	0.75" x 1" (19.05 mm x 25.4 mm)
OP-15	1" x 1" (25.4 mm x 25.4 mm)
OP-16	1.25" x 1.25" (31.75 mm x 31.75 mm)
OP-17	1.5" x 1.5" (38.1 mm x 38.1 mm)
OP-18	1.75" x 1.25" (44.45 mm x 31.75 mm)
OP-20	Assorted

PACKAGING: Bag of 50

OSTEOTOME PROTECTORS



ITEM #	DIMENSIONS	PACKAGING
RGS-01	1.5" (38 mm)	55 / Bag
RGS-02	2" (51 mm)	45 / Bag
RGS-03	3" (76.2 mm)	40 / Bag

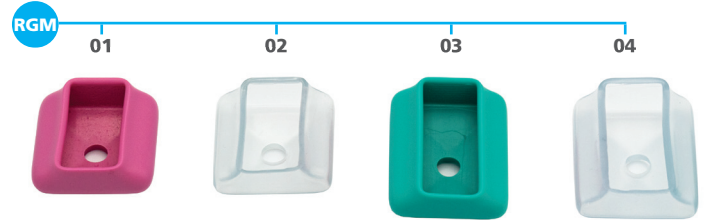
SINGLE-TIP RETRACTOR PROTECTORS



ITEM #	COLOR	SIZE
RGM-01	Pink	Small
RGM-02	Clear	Small
RGM-03	Green	Medium
RGM-04	Clear	Medium

PACKAGING: Bag of 50

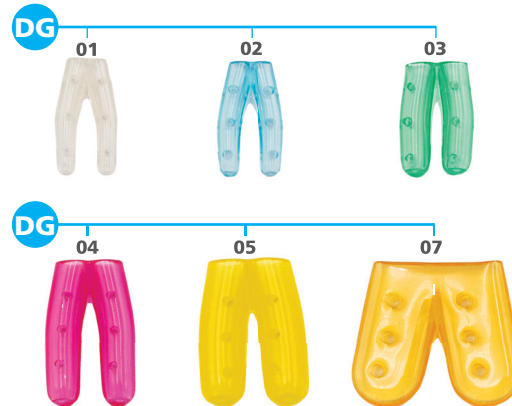
WEITLANER RETRACTOR PROTECTORS



ITEM #	COLOR	DIMENSIONS
DG-01	Clear	0.0625" x 0.75" (1.59 mm x 19.05 mm)
DG-02	Blue	0.078" x 0.75" (1.98 mm x 19.05 mm)
DG-03	Green	0.109" x 0.75" (2.78 mm x 19.05 mm)
DG-04	Red	0.125" x 1" (3.18 mm x 25.4 mm)
DG-05	Yellow	0.187" x 1" (4.76 mm x 25.4 mm)
DG-07	Orange	0.062" x 0.375" x 1" (1.59 mm x 9.53 mm x 25.4 mm)
DG-10	Assorted	Assorted

PACKAGING: Bag of 50

PERFORATED DOUBLE PROTECTORS



BATRIK PrAmLi Power³ LUBE™ Instrument Lubricant

Specially formulated to lubricate surgical instruments, hinges, box locks, and general equipment during autoclaving. PrAmLi Power³ LUBE™ is uniquely formulated with an all natural corrosion inhibitor.

- Forms a protective coating which can extend the instrument's, useful life
- Bacteriostatic
- Neutral pH 6.5 - 7.5
- Prevents corrosion

TIP:
FOR MILK BATH SOLUTION,
DILUTE 1 PART SOLUTION
IN 6 PARTS WATER

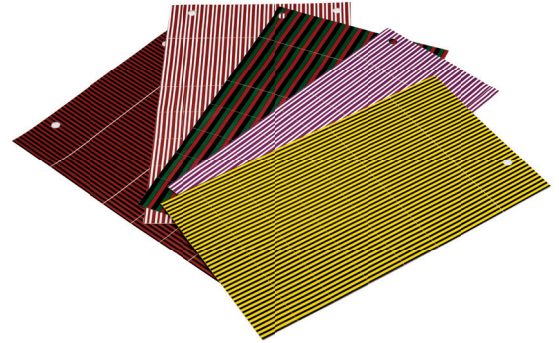


PRODUCT SELECTION

ITEM #	DILUTION LUBRICANT / WATER	PACKAGING
SS-21-6001	1 to 4 ml / L (0.125 to 0.5 oz / Gallon)	1 x 3.8 L (1 Gallon)
SS-21-6004	1 to 4 ml / L (0.125 to 0.5 oz / Gallon)	4 x 3.8 L (4 Gallons)
SS-21-6025	1 to 4 ml / L (0.125 to 0.5 oz / Gallon)	2 x 9.5 L (2 x 2.5 Gallons)
SS-21-6032	No dilution required	1 x 946 ml (32 oz) Spray bottle
SS-21-6012	No dilution required	12 X 946 ml (32 oz) Spray Bottles

BATRIK S.T.I.C.S.

Our Simple Tracking Identification Color System, or S.T.I.C.S., is an easy to use, latex free, tool that allows you to quickly identify your instruments by department and/or procedure. The tape adheres securely and every tape sheet comes with a protective cover to ensure it lasts as long as you need.



Each 8.5" x 11" (216 mm x 279 mm) sheet contains the following adhesive strips:

- 1" (25.4 mm) x 220
- 1.5" (38.1 mm) x 44
- 2" (50.8 mm) x 44
- Total tape per sheet 374" (9500 mm)

PRODUCT SELECTION

SOLID COLORS	
ITEM #	COLOR
T-850-2-01	White
T-850-2-02	Royal Blue
T-850-2-03	Kelly Green
T-850-2-04	Red
T-850-2-05	Yellow
T-850-2-06	Purple
T-850-2-07	Orange
T-850-2-08	Brown
T-850-2-09	Black
T-850-2-10	Gray
T-850-2-11	Lavender
T-850-2-12	Beige
T-850-2-13	Light Blue
T-850-2-14	Lime Green
T-850-2-15	Pink
T-850-2-17	Plum
T-850-2-18	Mint Green

BLACK STRIPES	
ITEM #	COLOR
T-850-3-01	Black/White
T-850-3-03	Black/Kelly Green
T-850-3-04	Black/Red
T-850-3-05	Black/Yellow
T-850-3-07	Black/Orange
T-850-3-10	Black/Gray
T-850-3-11	Black/Lavender
T-850-3-12	Black/Beige
T-850-3-13	Black/Light Blue
T-850-3-14	Black/Lime Green
T-850-3-15	Black/Pink
T-850-3-17	Black/Plum

TRI-COLOR	
ITEM #	COLOR
T-850-5-51	Red/White/Blue
T-850-5-54	Red/Black/Green

WHITE STRIPES	
ITEM #	COLOR
T-850-4-02	White/Royal Blue
T-850-4-03	White/Kelly Green
T-850-4-04	White/Red
T-850-4-05	White/Yellow
T-850-4-07	White/Orange
T-850-4-08	White/Brown
T-850-4-11	White/Lavender
T-850-4-13	White/Light Blue
T-850-4-14	White/Lime Green
T-850-4-15	White/Pink
T-850-4-17	White/Plum

FOUR-COLOR	
ITEM #	COLOR
T-850-2-31	Red/Yellow/ Purple/Orange
T-850-2-32	Blue/White/ Black/Green

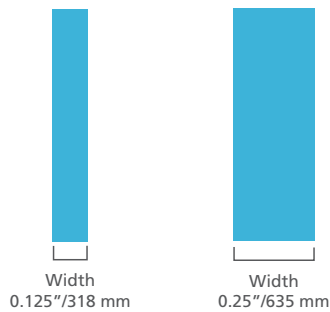
SPECIALTY	
ITEM #	COLOR
T-850-7-04	Yellow/Red

BATRIK ID TAPE

A simple solution for marking surgical instruments with the aid of color-coding, our ID Tape is durable and will not chip, flake, or peel. It can be used in autoclaves, withstanding repeated exposure to sterilization. Independent validation tests demonstrated the efficiency of sterilization of marked instruments, even underneath the BATRIK ID Tape.



AVAILABLE WIDTHS



Quickly identifies instruments by department or procedure



Easy to apply



Withstands repeated exposure to sterilization



Has more per tape roll (300" / 7620 mm)



Available in 9 colors and 2 widths



Conveniently packaged in a clear box



Non-Sterile

PRODUCT SELECTION

ITEM #	ITEM#	COLOR
0.125" / 318 MM	0.25" / 635 MM	
T-125-01	T-250-01	White
T-125-02	T-250-02	Blue
T-125-03	T-250-03	Green
T-125-04	T-250-04	Red
T-125-05	T-250-05	Yellow
T-125-06	T-250-06	Purple
T-125-07	T-250-07	Orange
T-125-08	T-250-08	Brown
T-125-09	T-250-09	Black

BATRIK TAPE-B-GONE™ TAPE REMOVER

Tape-B-Gone™ is a uniquely formulated and ready-to-use proprietary formula that easily removes adhesives from medical equipment and instruments. Unlike many other brands, Tape-B-Gone™ does not contain highly dangerous or caustic chemicals, is not flammable or combustible, and is safe for use on metal, glass, plastic, and rubber without any special equipment or ventilation.



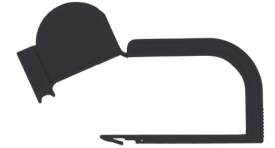
PRODUCT SELECTION

ITEM #	DESCRIPTION	PACKAGING
T-08RMV	8 oz (237 ml) bottle	1 Unit
T-32RMV	8 oz (237 ml) bottle	4 / Pack
T-SAMP-RMV	0.5 oz (15 ml) bottle	1 Unit

BATRIK PADLOCKS SECURITY TAGS

Our Padlock Security Tags for instrument containers and general hospital applications are specifically designed for the healthcare market. Our material selection, fabrication process, and engineering ensure consistent quality and high temperature compliance with the various steam sterilization temperatures in worldwide hospital applications.

Available with optional reactive ink indicator dots that provide visual sterility indication. Light blue dots turn brown/dark brown when steam sterilized.



Made of polypropylene



Latex and DEHP Free



Will not melt or soften with any established steam sterilization protocol



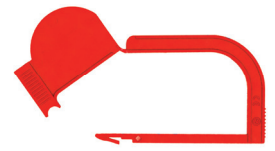
Fully open design (45°) facilitates insertion into instrument containers



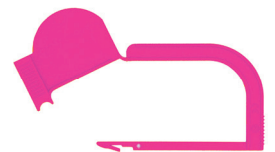
Easy twist breaking design



Large base for easier handling



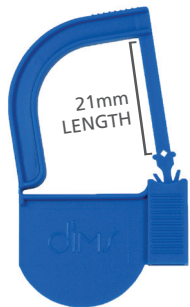
Available in different size



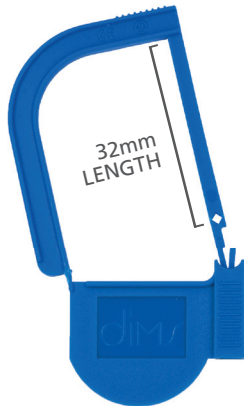
Custom Colors and OEM available upon request

AVAILABLE IN THREE FORMATS

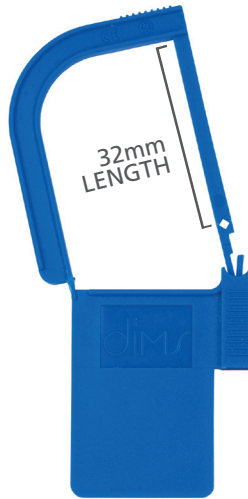
700-SERIES



800-SERIES



900-SERIES



PRINTED & CUSTOM NUMBERED PADLOCKS

Available in 700, 800 & 900 SERIES

PRODUCT SELECTION

COLOR	PRINTED WORD
PRINTED PADLOCKS	
WHITE	CLEAN
BLUE	STERILE
RED	REPAIR
YELLOW	SHARPEN
YELLOW	LOANER
BLACK	DISCARD
CUSTOM NUMBERED	
ALL COLORS	up to 8 numbers



CUSTOM NUMBERED
Custom printed padlocks (up to 8 characters)



PRINTED
6 different printed labels available

NOTE: Printed & Custom Numbered Padlocks are available in 700, 800, and 900 Series and can be ordered in 100, 200, and 500 unit quantities. Please contact us for ordering details.

INDICATOR DOTS



REGULAR



700-SERIES PADLOCKS

The 700 series padlocks are perfect for "Aesculap" containers and those with a short, large opening.

PRODUCT SELECTION

REGULAR PADLOCKS

COLOR	100 UNITS	200 UNITS	500 UNITS
WHITE	15-701	15-711	15-710
BLUE	15-702	15-712	15-720
GREEN	15-703	15-713	15-730
RED	15-704	15-714	15-740
YELLOW	15-705	15-715	15-750
PINK	15-706	15-716	15-760
ORANGE	15-707	15-717	15-770
BLACK	15-709	15-719	15-790
LIGHT BLUE	15-722	15-732	15-742

WITH INDICATORS DOTS

COLOR	100 UNITS	200 UNITS	500 UNITS
WHITE	15-701-IND	15-711-IND	15-710-IND
BLUE	15-702-IND	15-712-IND	15-720-IND
GREEN	15-703-IND	15-713-IND	15-730-IND
RED	15-704-IND	15-714-IND	15-740-IND
YELLOW	15-705-IND	15-715-IND	15-750-IND
PINK	15-706-IND	15-716-IND	15-760-IND
ORANGE	15-707-IND	15-717-IND	15-770-IND
BLACK	15-709-IND	15-719-IND	15-790-IND
LIGHT BLUE	15-722-IND	15-732-IND	15-742-IND

Double locking hooks can be inserted in a large guide hole



The grooves on the padlock facilitate handling



INDICATOR DOTS

REGULAR



800-SERIES PADLOCKS

The 800 series padlocks have a longer arm (32 mm) and have a single, thinner hook than the 700 series. They are perfect for almost any type of container, even those with long and thin channels.

PRODUCT SELECTION

REGULAR PADLOCKS

COLOR	100 UNITS	200 UNITS	500 UNITS
WHITE	15-801	15-811	15-810
BLUE	15-802	15-812	15-820
GREEN	15-803	15-813	15-830
RED	15-804	15-814	15-840
YELLOW	15-805	15-815	15-850
PINK	15-806	15-816	15-860
ORANGE	15-807	15-817	15-870
BLACK	15-809	15-819	15-890
LIGHT BLUE	15-822	15-832	15-842

WITH INDICATORS DOTS

COLOR	100 UNITS	200 UNITS	500 UNITS
WHITE	15-801-IND	15-811-IND	15-810-IND
BLUE	15-802-IND	15-812-IND	15-820-IND
GREEN	15-803-IND	15-813-IND	15-830-IND
RED	15-804-IND	15-814-IND	15-840-IND
YELLOW	15-805-IND	15-815-IND	15-850-IND
PINK	15-806-IND	15-816-IND	15-860-IND
ORANGE	15-807-IND	15-817-IND	15-870-IND
BLACK	15-809-IND	15-819-IND	15-890-IND
LIGHT BLUE	15-822-IND	15-832-IND	15-842-IND

Single locking hook can be inserted in a large guide hole

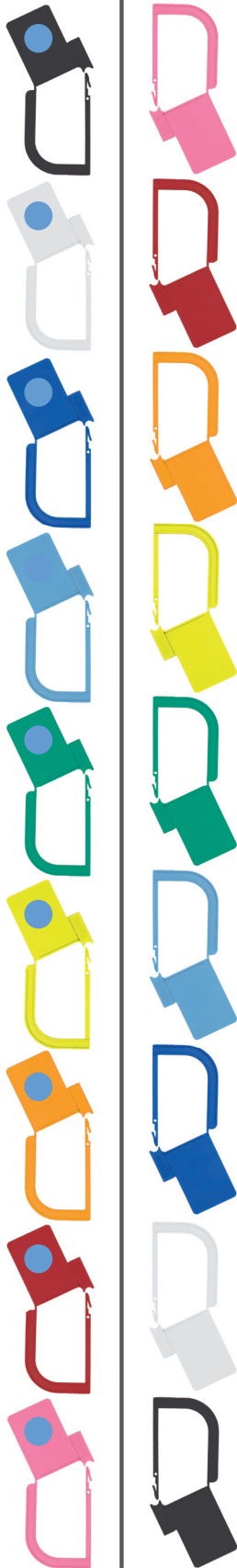


The locking system allows for **easy closure**



INDICATOR DOTS

REGULAR



900-SERIES PADLOCKS

The 900 series padlocks are identical to the 800 series, but with a larger rectangular base which allows for the placement of a 20 mm x 30 mm tracking label.

PRODUCT SELECTION

REGULAR PADLOCKS

COLOR	100 UNITS	200 UNITS	500 UNITS
WHITE	15-901	15-911	15-910
BLUE	15-902	15-912	15-920
GREEN	15-903	15-913	15-930
RED	15-904	15-914	15-940
YELLOW	15-905	15-915	15-950
PINK	15-906	15-916	15-960
ORANGE	15-907	15-917	15-970
BLACK	15-909	15-919	15-990
LIGHT BLUE	15-922	15-932	15-942

WITH INDICATORS DOTS

COLOR	100 UNITS	200 UNITS	500 UNITS
WHITE	15-901-IND	15-911-IND	15-910-IND
BLUE	15-902-IND	15-912-IND	15-920-IND
GREEN	15-903-IND	15-913-IND	15-930-IND
RED	15-904-IND	15-914-IND	15-940-IND
YELLOW	15-905-IND	15-915-IND	15-950-IND
PINK	15-906-IND	15-916-IND	15-960-IND
ORANGE	15-907-IND	15-917-IND	15-970-IND
BLACK	15-909-IND	15-919-IND	15-990-IND
LIGHT BLUE	15-922-IND	15-932-IND	15-942-IND

Single locking hook
for use with smaller diameters



Ideal for adding labels/ indicators indicators or markings to the large rectangular base

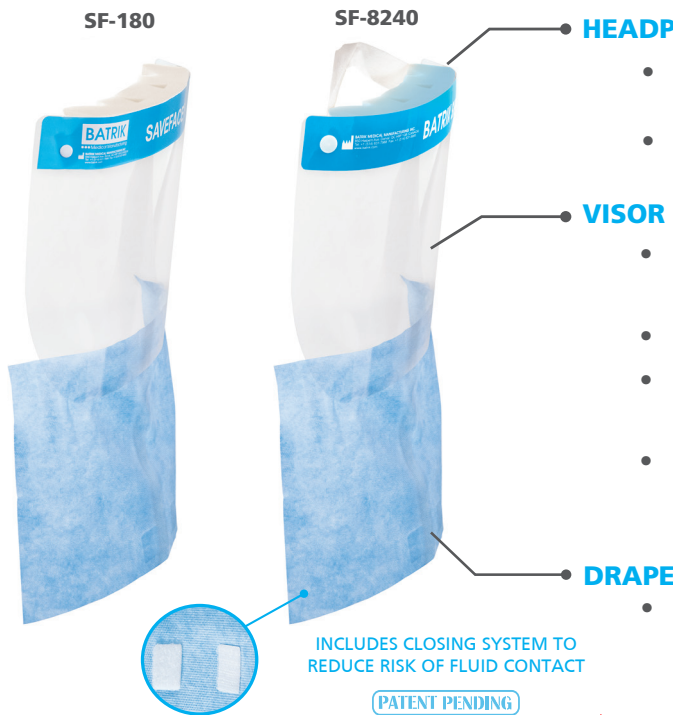
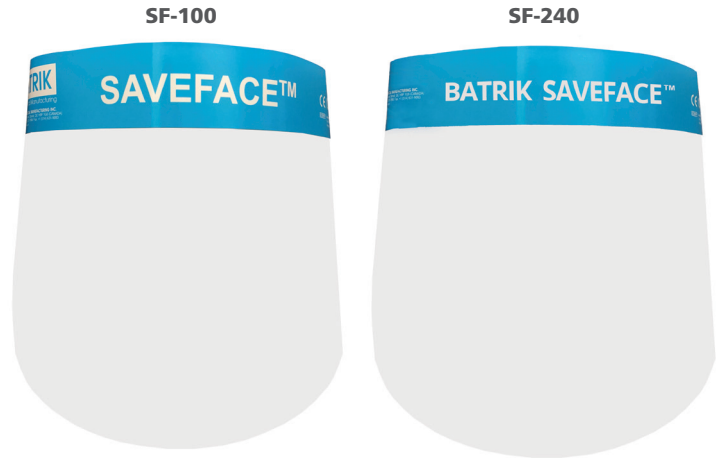


BATRIK SAVEFACE™ FACE SHIELDS

Our Batrik SaveFace™ Face Shields (Visors) are lightweight and allow for good peripheral vision while acting as a physical barrier against splashes. Can be used for extended periods due to comfort-focused design and superior quality materials.

Choose amongst non-draped and draped models:

- Our classic **non-draped** models close the gap between the shield and the chest bone when head is tilted forward for added protection.
- Our **draped** models offer full-length coverage extending from the top of the eyebrow to below the chest, covering the anterior neck area as per CDC recommendations.



- Self-shaping foam headpieces mold and cushion forehead for a comfortable and secure fit (per CDC recommendations)
- Shielded air vents maximize airflow for enhanced comfort and prevent fogging
- Excellent Distortion-Free Optical Clarity with flat viewing area reduces distortion and glare
- Features anti-fog treatment for clear view
- Wide visors provide peripheral protection to help prevent splashes from going into the eyes
- High Quality PET
 - SF-100/SF-180: 7.5 mil (0.19 mm) thick
 - SF-240/SF-8240: 9.84 mil (0.25 mm) thick
- Our patent-pending drape models come equipped with integrated ANSI/AAMI PB70 Level 3 compliant splash drape barriers for added protection

ASSEMBLED IN CANADA

PRODUCT SELECTION

ITEM #	DESCRIPTION	DIMENSIONS	TOTAL LENGTH	PACKAGING
SF-100	SAVEFACE™ no drape	Shield Length: 9" / 23 cm Shield Width: 13" / 33 cm	9" (23 cm)	100 / Box
SF-180	SAVEFACE™ with ANSI/AAMI PB70 Level 3 compliant protection drape	Shield Length: 9" / 23 cm Shield Width: 13" / 33 cm Drape Length: 6" / 15 cm	15" (38 cm)	100 / Box
SF-240	BATRIK SAVEFACE™ no drape	Shield Length: 9" / 23 cm Shield Width: 13" / 33 cm	9" (23 cm)	240 / Case (8 Boxes of 30 Pcs)
SF-8240	BATRIK SAVEFACE™ with ANSI/AAMI PB70 Level 3 compliant protection drape	Shield Length: 9" / 23 cm Shield Width: 13" / 33 cm Drape Length: 6" / 15 cm	15" (38 cm)	240 / Case (8 Boxes of 30 Pcs)

BATRIK SHIELD™ FACE SHIELD

A cost-effective alternative to our premium SAVEFACE™ models, the Batrik Shield™ provides excellent splash protection. An ideal safety addition to all pandemic kits.

- Self-shaping foam head piece molds comfortably to forehead
- Shields can be used for longer periods due to comfort and improved materials
- Optical shield with anti-fog and anti-glare provide a clearer viewing area
- Soft plastic fasteners adhere the elastic band to the shield for additional comfort and easy use
- Latex free



PATENT PENDING

ASSEMBLED IN CANADA 

PRODUCT SELECTION

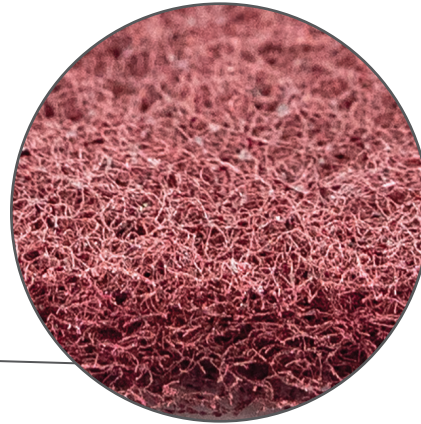
ITEM #	DESCRIPTION	DIMENSIONS	TOTAL LENGTH	PACKAGING
SF-096	BATRIK Shield™ no drape	Shield Length: 9" / 23 cm*	9" (23 cm)*	96 / Box
SF-896	BATRIK Shield™ with ANSI/AAMI PB70 Level 3 compliant protection drape	Shield Length: 9" / 23 cm* Drape Length: 7" / 17.8 cm	15.9" / 40.3 cm*	96 / Box

*Shield product tolerances: 8.9" - 9.5" / 22.5 cm - 23.2 cm

BATRIK SCRUB PAD

Our Scrub Pad is ideal for pre-cleaning your surgical instruments without leaving any metal residue that often occurs when using steel wool or metal sponges. The abrasiveness is perfectly balanced to provide you with efficient cleaning without damaging your instruments. Its fine fibers allow the user to polish, clean, and debur all types of material surfaces.

- Abrasive Material: Aluminum Oxide
- Grit: 400
- Grade: Very Fine
- Style: Flexible
- Pad material: Non-Woven
- Color: Maroon
- Type: Hand Pad



PRODUCT SELECTION

ITEM #	DESCRIPTION	DIMENSIONS	PACKAGING
60-46050	Scrub Pad	4" x 6" / 10 cm x 15 cm	150 / Box (50 bags of 3 units each)
60-46003	Scrub Pad	4" x 6" / 10 cm x 15 cm	3 / Bag

Your First ™

ENZYMATIC & NON-ENZYMATIC CLEANERS

Our Enzymatic and Non-Enzymatic Cleaners are specially formulated to remove organic material from medical equipment and instrumentation.

Our **Enzymatic Cleaner** formats are formulated with PrAmLi Power3 Enzymes™, our proprietary unique blend of enzymes, and a surfactant to efficiently remove all proteins, blood, fatty tissue, and more. They also remove stains from surgical scrubs, linens, and medical clothing.

Our **Non-Enzymatic Cleaner** formats are formulated with a free-rinsing, neutral pH detergent blend for effective cleaning.



Both formats are powerful solutions that break down all bioburden for effective surface and instrument pre-cleaning*

PRODUCT SELECTION

ENZYMATIC CLEANER	NON-ENZYMATIC CLEANER	DILUTION DETERGENT / WATER	PACKAGING
LOW FOAM			
SS-21-1001	SS-721-1001	4 to 8 ml / L (0.5 to 1 oz / Gal)	1 x 3.8 L (1 Gal)
SS-21-1004	SS-721-1004	4 to 8 ml / L (0.5 to 1 oz / Gal)	4 x 3.8 L (4 Gal)
MILD FOAM			
SS-21-2001	SS-721-2001	4 to 8 ml / L (0.5 to 1 oz / Gal)	1 x 3.8 L (1 Gal)
SS-21-2004	SS-721-2004	4 to 8 ml / L (0.5 to 1 oz / Gal)	4 x 3.8 L (4 Gal)
SUPER CONCENTRATE			
SS-21-3001	SS-721-3001	1 to 2 ml / L (0.125 to 0.25 oz / Gal)	1 x 3.8 L (1 Gal)
SS-21-3004	SS-721-3004	1 to 2 ml / L (0.125 to 0.25 oz / Gal)	4 x 3.8 L (4 Gal)

GOOD TO KNOW:

OUR LOW FOAM & SUPER CONCENTRATE DETERGENTS (ENZYMATIC & NON-ENZYMATIC) MAY BE USED IN WASHERS / ULTRASONIC CLEANERS.

WE RECOMMEND CONFIRMING SUGGESTED DILUTION RATIO AND WATER TEMPERATURE WITH THE MANUFACTURER OF YOUR WASHER / ULTRASONIC CLEANER AS MACHINES / SETTINGS VARY.

NOTE: Our Low Foam & Super Concentrate Detergent formulas are available in a 2.5 Gallon format based on a minimum order quantity. Contact us for more information.

*Caution: We recommend consulting your hospital pre-cleaning/cleaning protocols for various equipment/instrument cleaning detergent preferences.

Your First ™

ENVIRO-SACHET™

ENZYMATIC GEL & NON-ENZYMATIC CLEANER

Your First ™ Enviro-Sachet™, our unique cleaning solutions now available in Enzymatic & Non-Enzymatic formats.



- Our Enzymatic Gel format is formulated with the same triple action **PrAmLi Power³ Enzymes™** that you know and trust.
- Our Non-Enzymatic Cleaner format is formulated with a free-rinsing, neutral pH detergent blend.

Both formats are powerful solutions that break down all bioburden for effective surface and instrument pre-cleaning.

PRODUCT SELECTION

ENZYMATIC GEL	NON-EZYMATIC CLEANER	DESCRIPTION	PACKAGING
17-166	717-166	1 Dry Tubular Sponge & Enviro-Sachet™ set	25 / Box 4 Boxes / Case
17-266	717-266	1 Dry Flat Sponge & Enviro-Sachet™ set	50 / Box 4 Boxes / Case
17-177	717-177	1 Dry Tubular Sponge, Enviro-Sachet™ & Stainless Steel Bowl kit	1 Kit
17-277	717-277	1 Dry Flat Sponge, Enviro-Sachet™ & Stainless Steel Bowl kit	1 Kit
17-EZSAMP	717-EZSAMP	SAMPLE KIT INCLUDES: 3 Dry Flat Sponges with Enviro-Sachet™ sets 1 Dry Tubular Sponge with Enviro-Sachet™ set 1 Reusable Stainless Steel Bowl	1 Kit
H-EZ500		Reusable Stainless Steel Bowl 4.3" x 5.3" x 3" / 11 cm x 13.5 cm x 7.5 cm	1 Unit

Your First ™

FOAMING SPRAY

READY-TO-USE ENZYME FOAMING SPRAY

Our Foaming Spray is ideal for instrument pre-cleaning as the thick foam spray enzymatically breaks down all bioburden to allow for effective cleaning and sterilization.

Formulated with **PrAmLi Power³ Enzymes™**, a unique blend of three powerful enzymes along with a surfactant to provide the ultimate in cleaning efficacy



INSTRUCTIONS



PRODUCT SELECTION

ITEM #	PACKAGING
SS-21-4001	1 x 946 ml (32 oz) Spray Bottle
SS-21-4012	12 x 946 ml (32 oz) Spray Bottles

Important: In addition to our enzymatic formulation, our spray bottle contains as much as 25% more solution when compared to the competition.

Your First ™

FIRST WIPES

Our cleanroom wipes are designed to do the first wipe-down of an endoscope after a procedure. They are made from hydroentangled non-woven material composed of 45% polyester and 55% cellulose. These wipes are manufactured and packaged in a cleanroom environment.



- Can be used for a cleanroom environment of ISO Class 5 through 8
- Production process guarantees extremely low particle generation and chemical extractables
- Compatible with virtually any solvent or solution for cleaning and wiping (such as **PrAmLi Power³ Enzymes™**)
- Double-bag packaging
- Available in two versatile sizes

PRODUCT SELECTION

ITEM #	DESCRIPTION	DIMENSIONS	PACKAGING
17-A0909	Non-woven Cleanroom Wipes	9" x 9" (23 cm x 23 cm)	300 / Bag 14 Bags / Case
17-A1212	Non-woven Cleanroom Wipes	12" x 12" (31 cm x 31 cm)	150 / Bag 10 Bags / Case

Your First ™

DRY SPONGES

Our sponges are specifically fabricated for use with all medical instrumentation. Unlike most competitor sponges, our sponges are white to better evidence the effectiveness of the cleaning process. Dark colored sponges easily hide contaminants, but with our white sponges you can visually evaluate the pre-clean efficacy.



Will not flake or scratch expensive equipment

Available in two formats, Flat and Tubular:

Eco-friendly

100% medical grade high-density foam

Compatible with enzymatic and disinfectant solutions

TIP: OUR TUBULAR SPONGE CAN ALSO BE USED AS A BUMPER TO PROTECT YOUR SCOPES

High absorbency retains more solution than conventional sponges or paper wipes

OUR WHITE SPONGES MAY APPEAR SLIGHTLY YELLOWED. THIS IS ONLY DUE TO UV EXPOSURE, IS NOT A REFLECTION OF ITS AGE.

PRODUCT SELECTION

ITEM #	DESCRIPTION	DIMENSIONS	PACKAGING
17-100	DRY TUBULAR SPONGE White Dispenser Box	1.06" ø x 4.25" (2.7 cm ø x 10.8 cm)	25 / Box (4 Boxes / Case)
17-101	DRY TUBULAR SPONGE Bulk	1.06" ø x 4.25" (2.7 cm ø x 10.8 cm)	560 / Case
17-200	DRY FLAT SPONGE White Dispenser Box	4" x 5" x 0.5" (10.2 cm x 12.7 cm x 1.3 cm)	50 / Box (4 Boxes / Case)
17-201	DRY FLAT SPONGE Bulk	4" x 5" x 0.5" (10.2 cm x 12.7 cm x 1.3 cm)	1,000 / Case

Your First ™

ENZYMATIC SPONGES & BEDSIDE SPONGE KITS



Our Enzymatic Bedside Sponge Kits feature sponges all pre-treated with **PrAmLi Power³ Enzymes™** to provide the most effective pre-clean or surface clean solution. This unique three-enzyme blend provides you with confident and effective cleaning. The tubular sponge is ideal for all endoscopes.



PRODUCT SELECTION

ITEM #	DESCRIPTION	PACKAGING
17-111	DRY TUBULAR SPONGE Moisten in any 250-500 ml basin to activate the enzymatic concentrate.	25 / Box (4 Boxes / Case)
17-211	DRY FLAT SPONGE Moisten in any 250-500 ml basin to activate the enzymatic concentrate.	50 / Box (4 Boxes / Case)
17-122	DRY TUBULAR SPONGE Comes in a freestanding pouch to use as a basin. Simply add 500 ml of water.	15 / Box (4 Boxes / Case)
17-222	DRY FLAT SPONGE Comes in a freestanding pouch to use as a basin. Simply add 500 ml of water.	25 / Box (4 Boxes / Case)
17-133	READY TO USE TUBULAR SPONGE Comes bathing in 500 ml of enzymatic solution.	24 / Case
17-233	READY TO USE FLAT SPONGE Comes bathing in 500 ml of enzymatic solution.	24 / Case
17-144	READY TO USE DUAL PURPOSE TUBULAR SPONGE Comes in a freestanding pouch soaked in 100 ml of enzymatic solution.	12 / Box (4 Boxes / Case)
17-244	READY TO USE DUAL PURPOSE FLAT SPONGE Comes in a freestanding pouch soaked in 100 ml of enzymatic solution.	12 / Box (4 Boxes / Case)
17-155	READY TO USE TUBULAR SPONGE Comes bathing in 220 ml of enzymatic solution.	24 / Case
17-255	READY TO USE FLAT SPONGE Comes bathing in 220 ml of enzymatic solution.	24 / Case

Your First ™

NON-ENZYMATIC DETERGENT BEDSIDE SPONGE KITS



Our Bedside Sponge Kits with Non-Enzymatic Detergent are **Your First ™** in the medical instrument cleaning process.



PRODUCT SELECTION

ITEM #	DESCRIPTION	PACKAGING
717-122	DRY TUBULAR SPONGE Comes in a freestanding pouch to use as a basin. Simply add 500 ml of water.	15 / Box (4 Boxes / Case)
717-222	DRY FLAT SPONGE Comes in a freestanding pouch to use as a basin. Simply add 500 ml of water.	25 / Box (4 Boxes / Case)
717-133	READY TO USE TUBULAR SPONGE Comes bathing in 500 ml of detergent solution.	24 / Case
717-233	READY TO USE FLAT SPONGE Comes bathing in 500 ml of detergent solution.	24 / Case
717-144	READY TO USE DUAL PURPOSE TUBULAR SPONGE Comes in a freestanding pouch soaked in 100 ml of detergent solution.	12 / Box (4 Boxes / Case)
717-244	READY TO USE DUAL PURPOSE FLAT SPONGE Comes in a freestanding pouch soaked in 100 ml of detergent solution.	12 / Box (4 Boxes / Case)
717-155	READY TO USE TUBULAR SPONGE Comes bathing in 220 ml of detergent solution.	24 / Case
717-255	READY TO USE FLAT SPONGE Comes bathing in 220 ml of detergent solution.	24 / Case

Your First ™

TRANSPORT BAGS FOR ENDOSCOPE AND MEDICAL INSTRUMENTS

Thoughtfully designed to eliminate touch-points during endoscope transport from point-of-care to the reprocessing area, and back, focused on safety of patients and medical staff.

- Made of recyclable LDPE material known to be quite flexible, highly resilient, and tough
- Latex and DEHP-free
- Excellent resistance to dilute and concentrated acids, alcohols, bases and esters*
- Good resistance to aldehydes, ketones, and vegetable-based oils*
- Can withstand high temperatures of up to 90 °C (194°F)
- Tamper-evident seal for added safety, also aids in keeping the instrument moist to avoid drying of bio-debris
- Clearly marked bags with color-coded visuals facilitates immediate identification of clean vs. used instruments
- Users can write important information directly on the bag in spaces marked with visual icons
- Available in two convenient sizes

GOOD TO KNOW: USING **Your First ™** SEALABLE TRANSPORT BAGS REDUCES USER ERROR, PREVENTS CROSS-CONTAMINATION, AND PROMOTES PATIENT AND MEDICAL STAFF SAFETY.

PRODUCT SELECTION

ITEM #	DESCRIPTION	DIMENSIONS	PACKAGING
17-HAP24	Clean Instruments Bag	24" x 22" / 61.0 cm x 56.0 cm	200 / Case
17-SAD24	Soiled Instruments Bag	24" x 22" / 61.0 cm x 56.0 cm	200 / Case
17-HAP30	Clean Instruments Bag	30.5" x 26" / 77.0 cm x 66.0 cm	200 / Case
17-SAD30	Soiled Instruments Bag	30.5" x 26" / 77.0 cm x 66.0 cm	200 / Case

*Reference on file

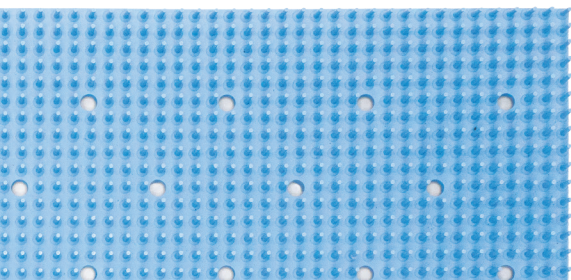
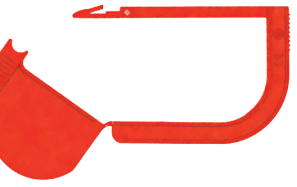
CLEAN INSTRUMENTS BAG



SOILED INSTRUMENTS BAG



MADE IN CANADA



SURGMED GROUP

2165 46th Ave., Lachine, Quebec H8T 2P1
Phone: +1.514.631.7988 | Toll Free: 800.661.5432 | Fax.: +1.514.631.9083
Email: info@surgmed.com | Website: www.batrik.com